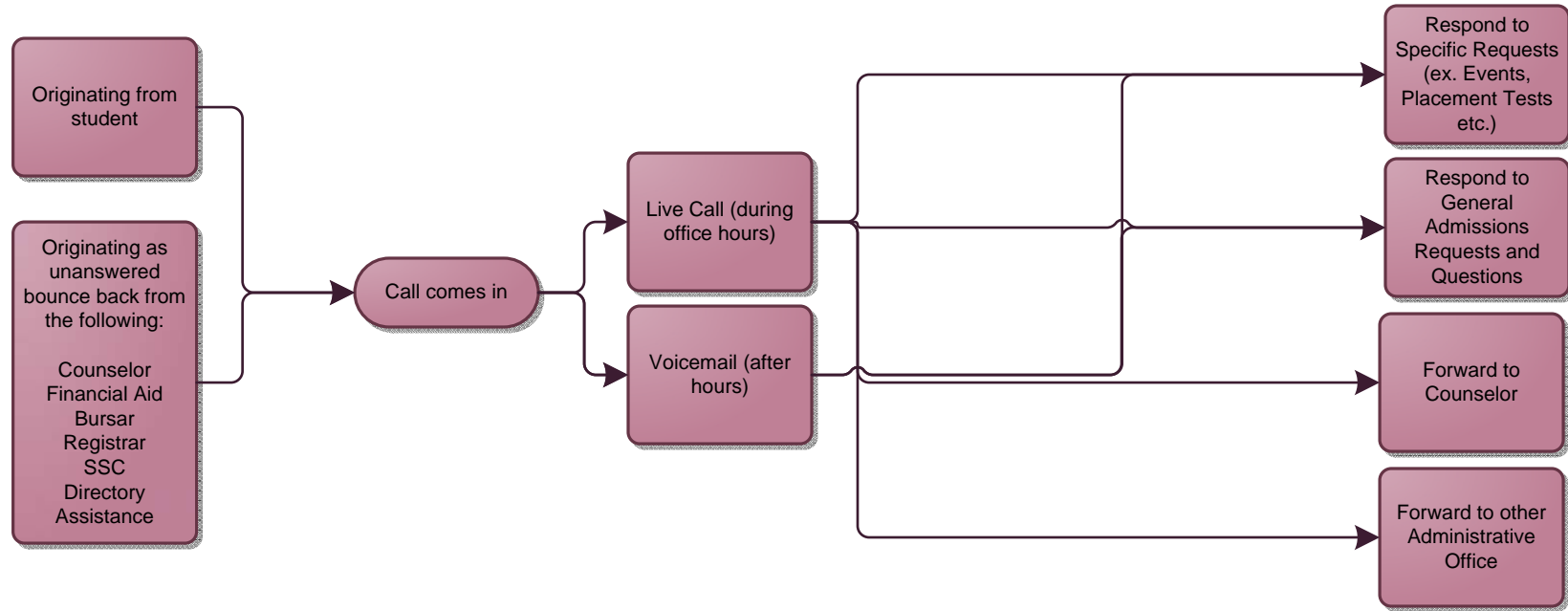
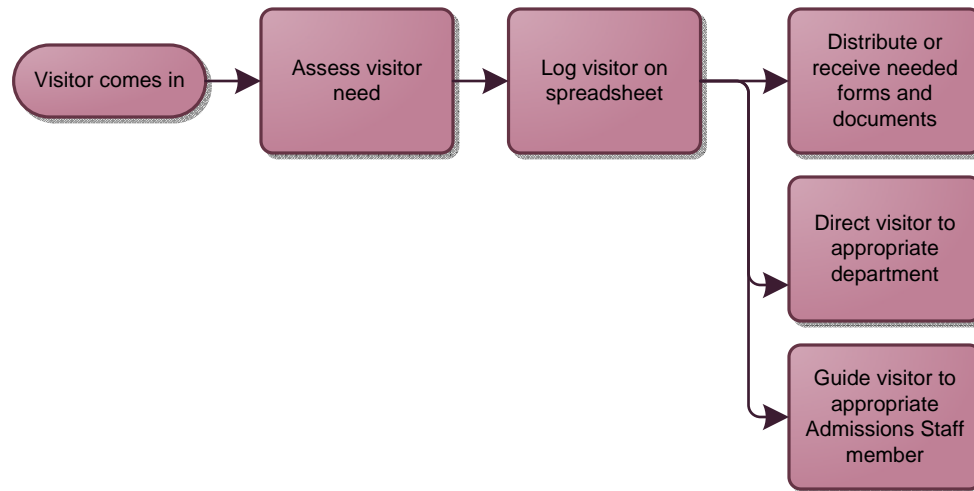


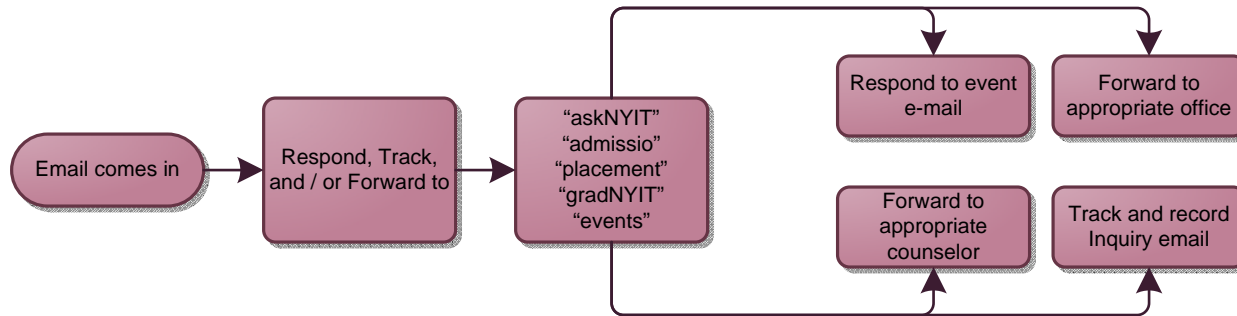
Phone



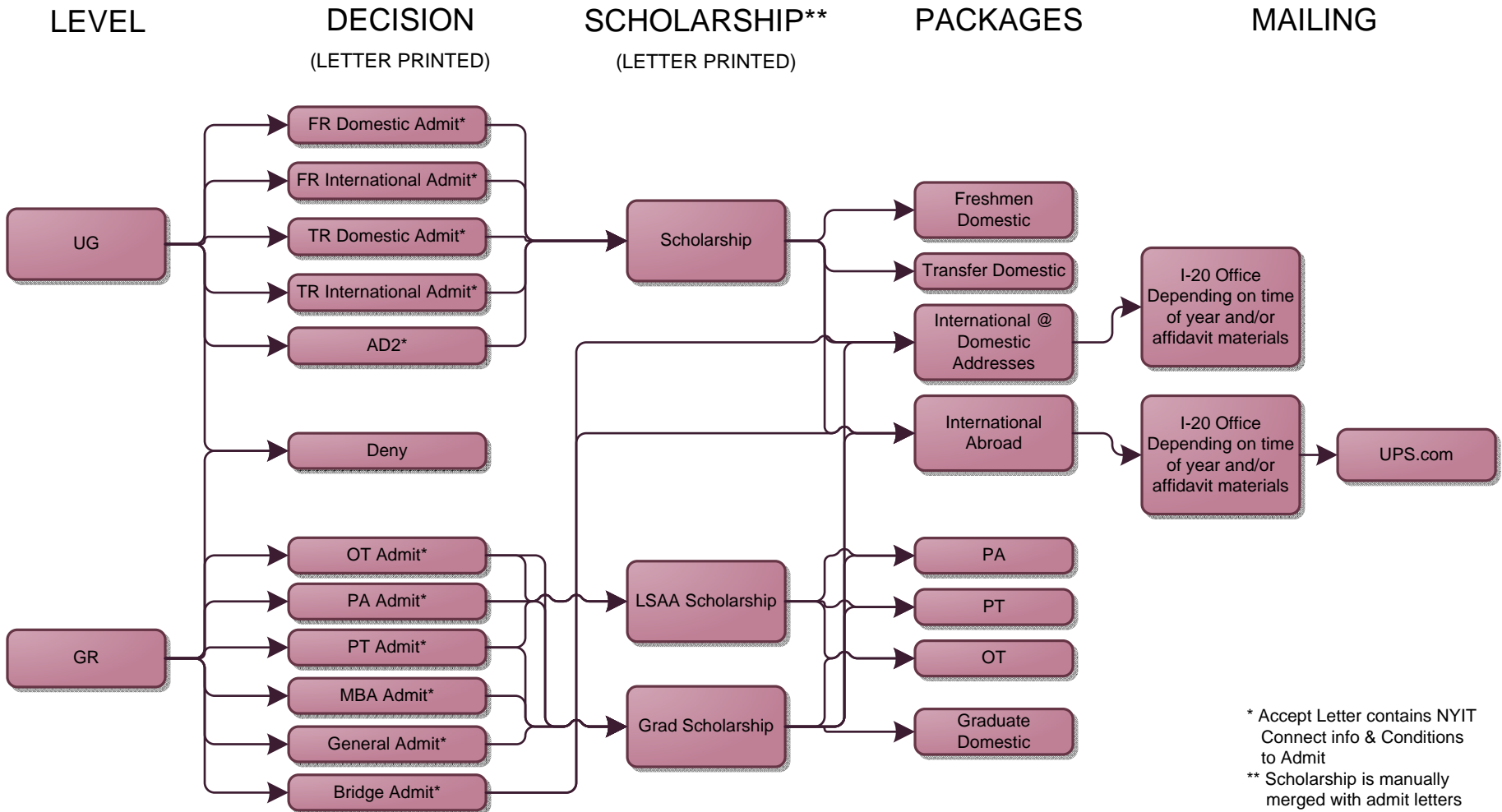
Front Desk



Email



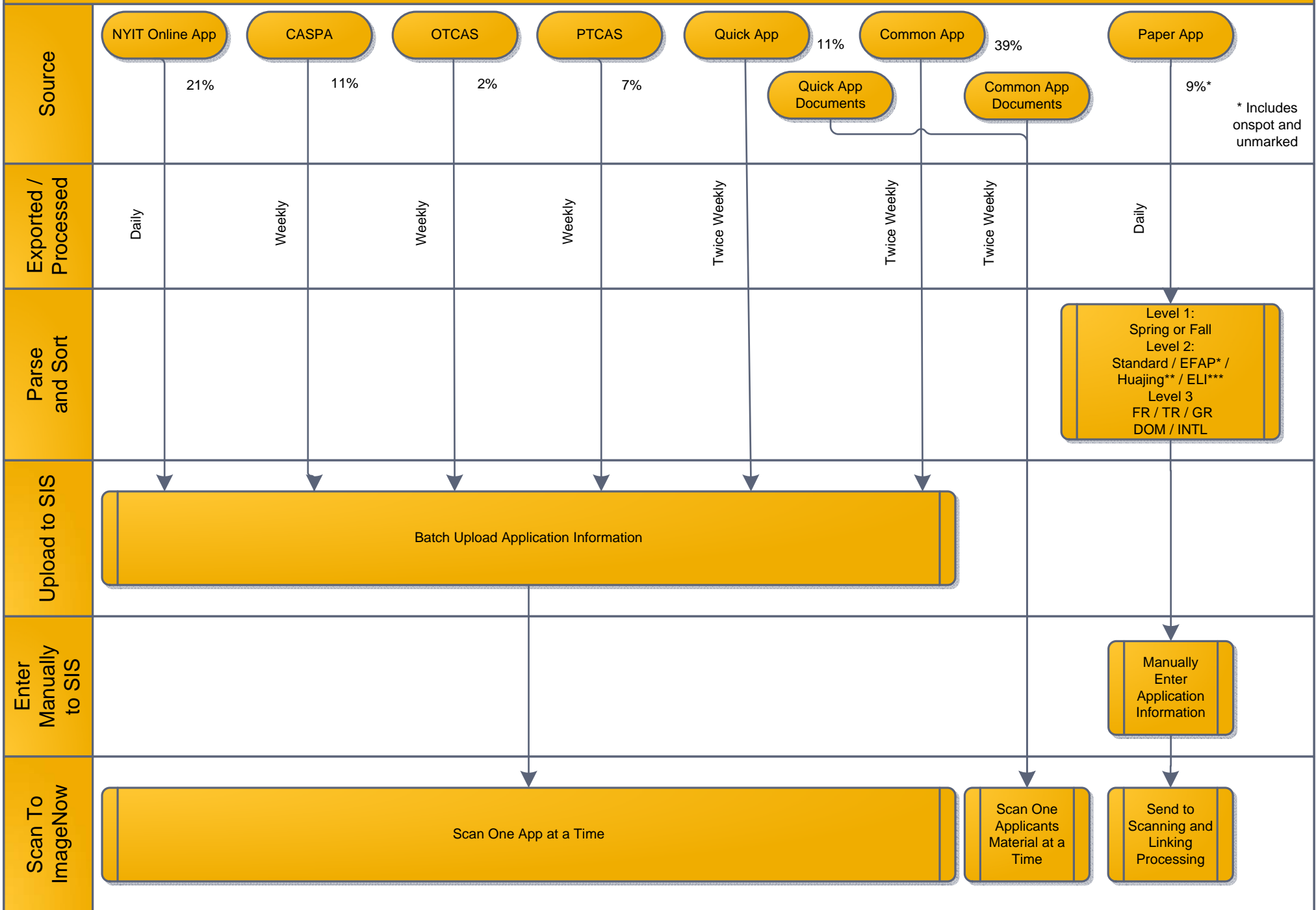
Letters



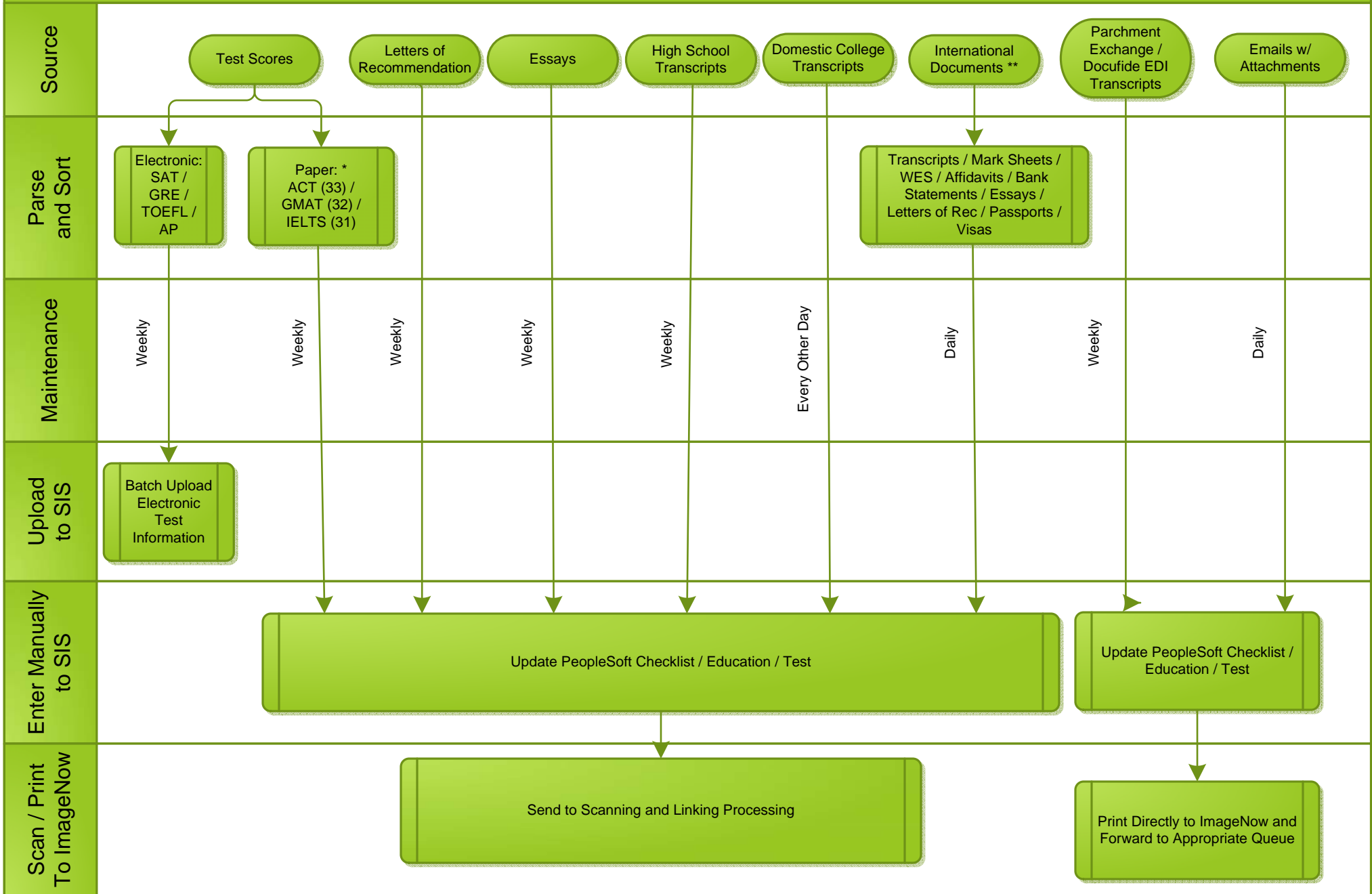
* Accept Letter contains NYIT Connect info & Conditions to Admit
 ** Scholarship is manually merged with admit letters

APPLICATION PROCESSING

* EFAP - Follows paper procedure
 ** Huajing – Follows paper procedure as. Source is International Office.
 ELI – Follows paper procedure. Source is email to NYITAdmisso. Image Key is in email



ADDENDUM MATERIALS PROCESSING (VOLUME DEPENDENT)

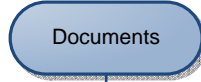


* Plan to move to electronic as PeopleSoft bundles allow

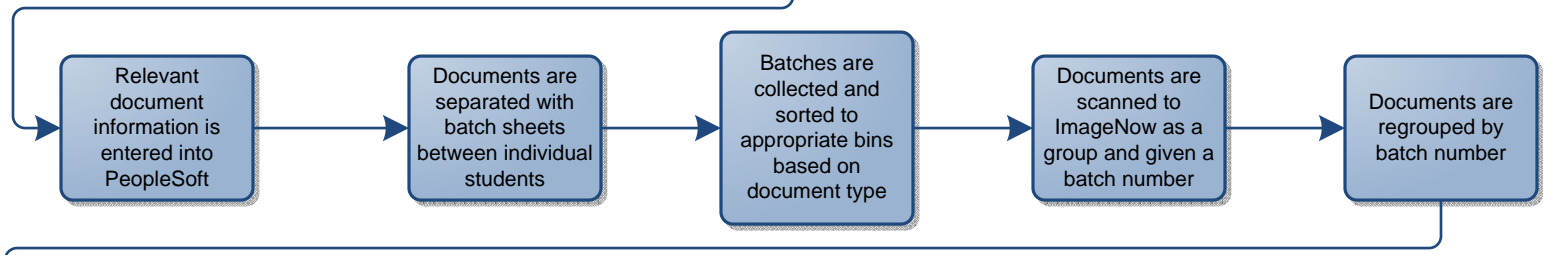
** Internationals account for 25% of all applications (3046 / 12360 as 3-10-14). Current 2014 volume already surpasses final 2013 numbers by 10% (3046 vs 2767)

SCANNING AND LINKING PROCEDURE (5 – 7 DAYS)

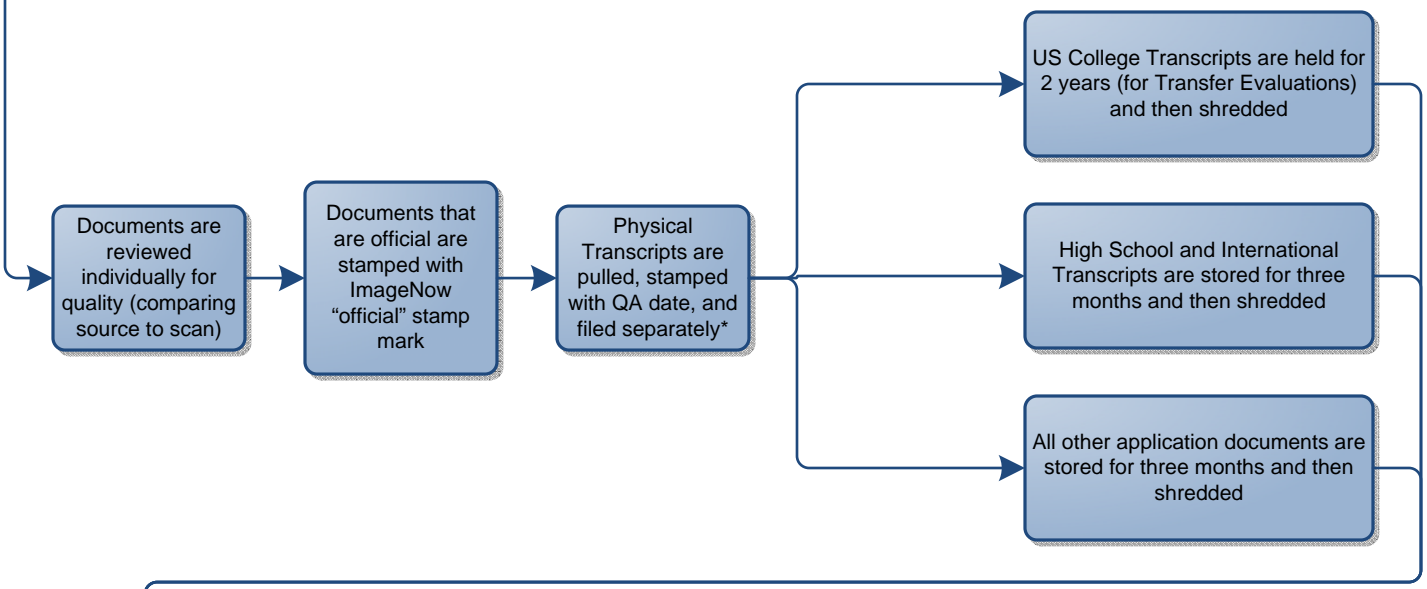
Source



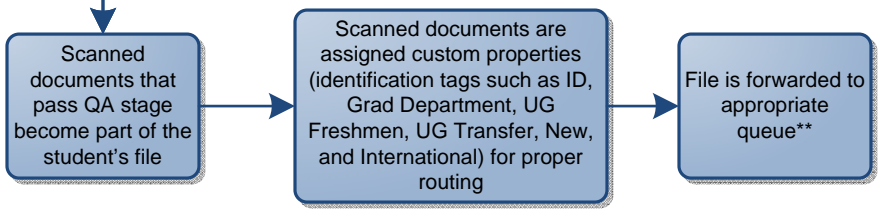
Scanning



Quality Assurance



Linking



** Grad 1, Grad 2, Grad 3, Undergraduate, Freshmen, Transfer, New, Workflow 1, ImageNow Printer, Ready I-20, Evaluations, Loose Documents